



# C TOWER

Viale Richard 3, Milan

SUBLEASE OPPORTUNITY

# C TOWER VIALE GIULIO RICHARD 3, MILAN

**TOTAL AVAILABLE AREA** Ca. 3,246 sqm

**ASKING RENT** 270 €/sqm/year + VAT

**AVAILABILITY** Immediate

**GRADE** A

## GENERAL FEATURES

Sublease Option

Delivery condition CAT A

Raised Floor

Common canteen inside the complex

Maximum capacity: 65 people per floor

Reception and security service from Monday to  
Friday from 8:00 to 20:00

## COMMENTS

5 car parkings per floor

Service charges: 55 €/sqm/year

Car Park: 1,200 €/unit/year + VAT

Moto Park: 600 €/unit/year + VAT



## Public transport



### Bus

- 98: Famagosta - Piazzale Lotto
- 47: Bisceglie - Romolo



### Tram

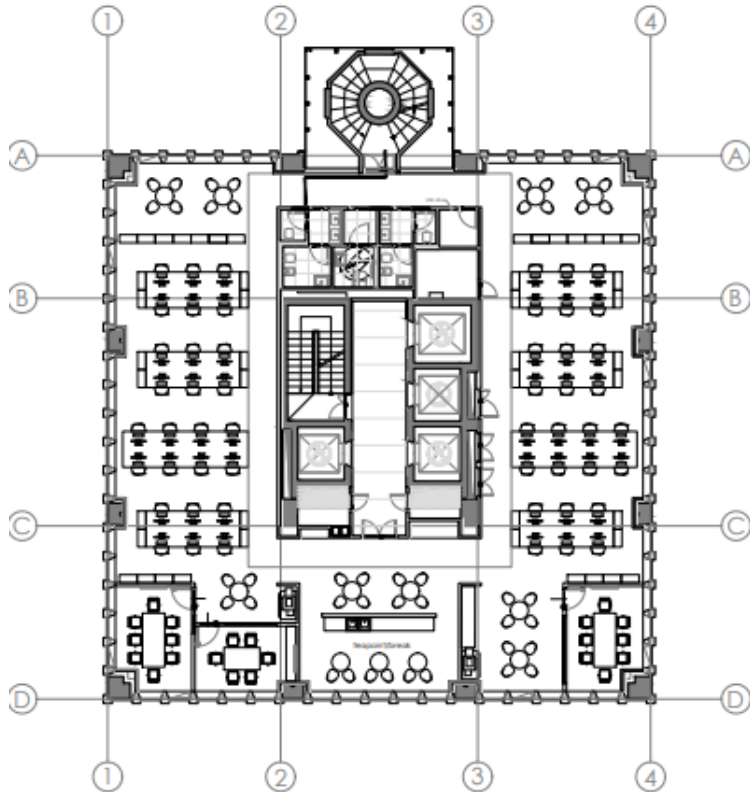
- 2: Bausan - Piazzale Negrelli



### Underground (2023)

- M4 Frattini

# C TOWER VIALE GIULIO RICHARD 3, MILAN



Floor	Available area (sqm)	Use
11	541	Office
12	541	Office
13	541	Office
14	541	Office
15	541	Office
16	541	Office

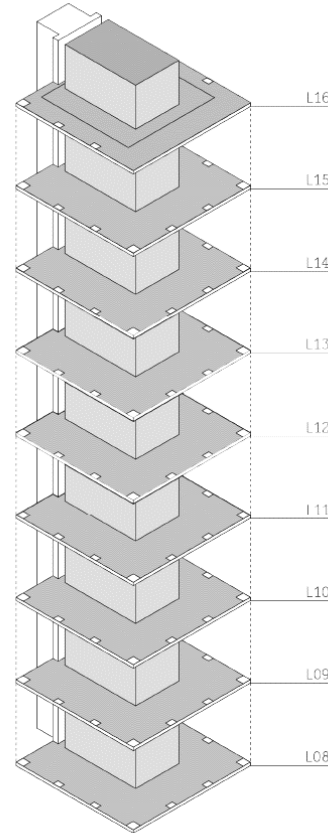
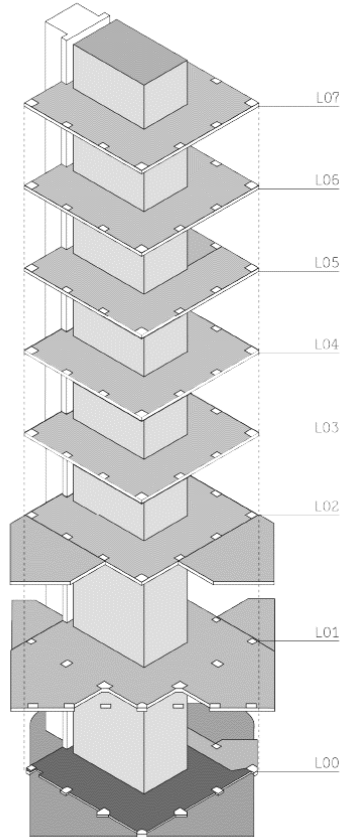
# C TOWER VIALE GIULIO RICHARD 3, MILAN

7° COWORKING

6° COWORKING

5° SUNPHARMA

WPP



16° AVAILABLE

15° AVAILABLE

14° AVAILABLE

13° AVAILABLE

12° Under Negotiation

11° Under Negotiation

10° HARPACEAS

9° HARPACEAS

8° COWORKING

# C TOWER VIALE GIULIO RICHARD 3, MILAN





Marketed by:



**CUSHMAN &  
WAKEFIELD**

C & W (U.K.) LLP  
Via Filippo Turati 16/18  
20121 Milano

VALENTINA CIBELLI  
+39 335 8327768  
[valentina.cibelli@cushwake.com](mailto:valentina.cibelli@cushwake.com)

DARIA LUNETTA  
+39 342 7420551  
[daria.lunetta@cushwake.com](mailto:daria.lunetta@cushwake.com)